

Wave-guide Measurement

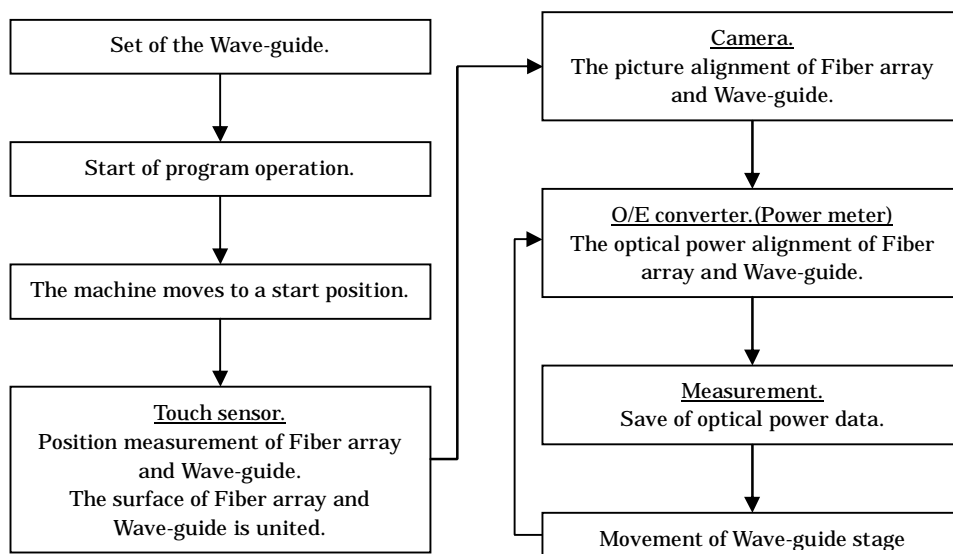


High precision alignment by original high rigidity SUS stage.

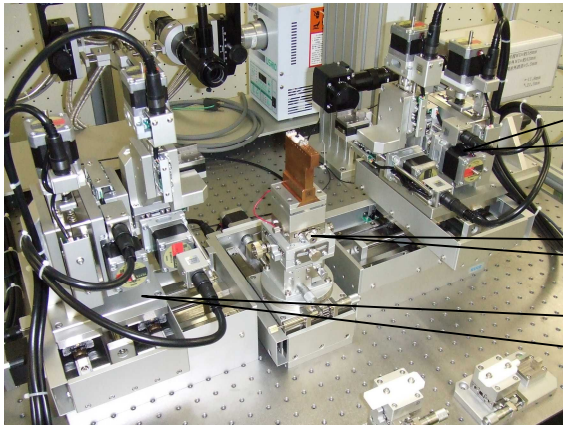
High speed alignment by original power meter.

High speed alignment by original multithread software.

The main flows of the alignment system.



The program can be changed freely.

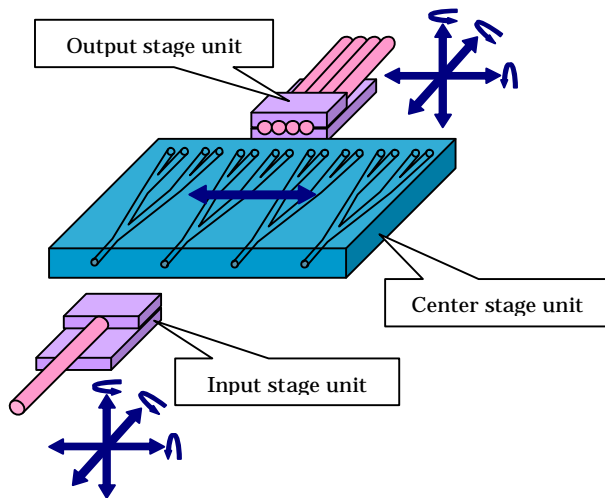


Output : Automatic Fiber array stage unit
 Automatic stage = X,Y,Z, θ_x , θ_y , θ_z
 The contact sensor is attached
 (It is automatic and the surface of Fiber array and Wave-guide is united.)
 Picture automatic alignment camera

Center : Automatic Wave-guide stage unit
 Automatic stage = X Manual stag = Y, θ_x , θ_y , θ_z

Input : Automatic Fiber array stage unit
 Automatic stage = X,Y,Z, θ_x , θ_y , θ_z
 The contact sensor is attached
 (It is automatic and the surface of Fiber array and Wave-guide is united.)

Auto Motion Axes (12axes)



The move part of each unit.

	Axis	Working Range	Resolution
Input Automatic Fiber array stage unit	LX	$\pm 25\text{mm}$	$0.025 \mu\text{m}$
	LY	$\pm 15\text{mm}$	$0.025 \mu\text{m}$
	LZ	$\pm 25\text{mm}$	$0.025 \mu\text{m}$
	L x	$\pm 8^\circ$	0.000015°
	L y	$\pm 8^\circ$	0.000012°
	L z	$\pm 8^\circ$	0.000012°
Center	CX	$\pm 50\text{mm}$	$0.025 \mu\text{m}$
	RX	$\pm 25\text{mm}$	$0.025 \mu\text{m}$
	RY	$\pm 15\text{mm}$	$0.025 \mu\text{m}$
Output Automatic Fiber array stage unit	RZ	$\pm 25\text{mm}$	$0.025 \mu\text{m}$
	R x	$\pm 8^\circ$	0.000015°
	R y	$\pm 8^\circ$	0.000012°
	R z	$\pm 8^\circ$	0.000012°

The main equipment of KS502-Measurement

The main mechanism portions	The main control unit
Input : Automatic Fiber array stage unit Automatic stage = X,Y,Z, θ_x , θ_y , θ_z The contact sensor is attached Fiber array holder	LD light source (Option)ASE light source Selection of wavelength can be performed.
	O/E converter (Nch)
	Stepper motor driver (13 axis)
Center : Automatic Wave-guide stage unit Automatic stage = Y Manual stag = Z, θ_x , θ_y , θ_z Wave-guide holder	Contact sensor driver (2ch)
Output : Automatic Fiber array stage unit Automatic stage = X,Y,Z, θ_x , θ_y , θ_z The contact sensor is attached Picture automatic alignment camera Fiber array holder	Computer Kuge proprietary Cockpit software Stepping motor controller board Picture board A/D board LCD monitor Computer rack
Stage unit of Observation camera. The observation camera and a monitor.(x 2)	
Anti-vibration table and Measurement shelf	



KUGE Co.,Ltd.

1733-4 Ichigaochou Aoba-ku Yokohama Kanagawa-ken Japan 225-0024

tel +81-45-975-0031 fax +81-45-975-0032

URL : <http://kuge-co.com> E-mell : info@kuge-co.com

May 2010